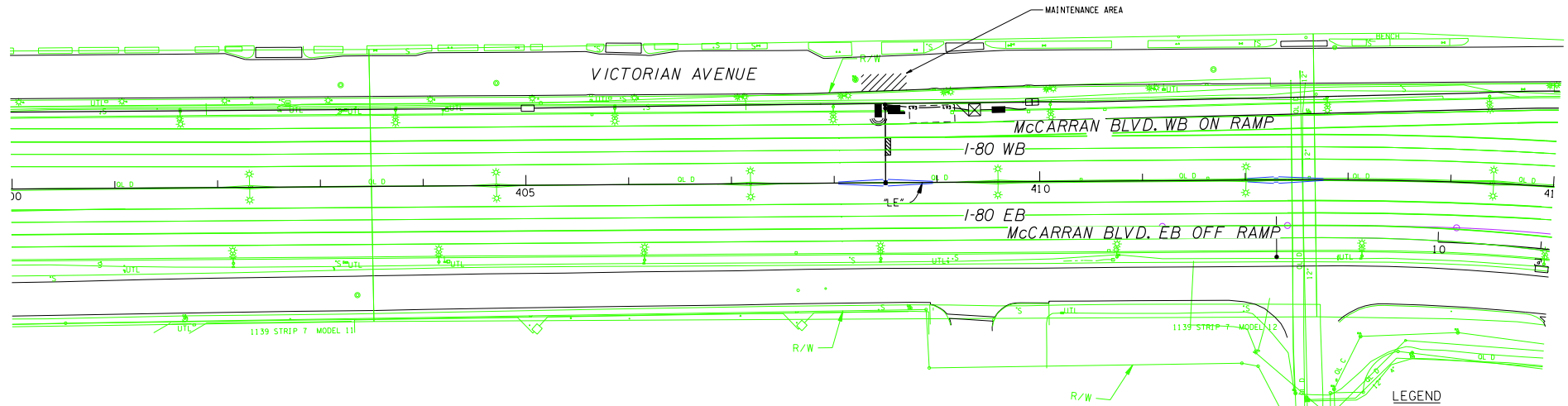
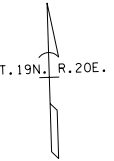
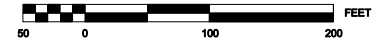


EXHIBIT A
VICTORIAN AVENUE

STATE	PROJECT NO.	COUNTY	SHEET NO.
NEVADA	SPI-080-110671	WASHOE	TC-A1

CONTRACT# 3441DB

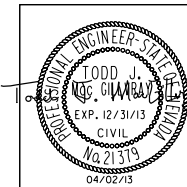


GENERAL NOTES:

1. MAINTENANCE AREA IS A 15'x40' AREA LOCATED IN THE FAR RIGHT EAST BOUND LANE OF VICTORIAN AVENUE ADJACENT TO A DYNAMIC MESSAGE SIGN AND A MICROWAVE RADAR DETECTION SENSOR.
2. THE MAINTENANCE WORK TO BE PERFORMED WILL BE THE USE OF A BUCKET TRUCK OR OTHER VEHICLE TO ACCESS NDOT EQUIPMENT LOCATED ADJACENT TO THE SITE.
3. COORDINATE WORK WITH THE CITY OF SPARKS PRIOR TO PERFORMING TRAFFIC CONTROL. CONTACT THE GENERAL MAINTENANCE DEPARTMENT AT (775) 353-2271 BETWEEN THE HOURS OF 6:00 AM TO 3:00 PM, FOR PHONE CALLS AFTER HOURS, CONTACT SPARKS POLICE DEPARTMENT DISPATCH NON-EMERGENCY LINE AT (775) 353-2231, AND ADVISE THE DISPATCHER WHERE WORK WILL BE OCCURRING AND WHETHER ANY SPECIAL ASSISTANCE FROM THE CITY OF SPARKS MAINTENANCE CREW WILL BE NEEDED.
4. SHEETS TC-E1 AND TC-A2 ARE REFERENCED FROM NDOT STANDARD PLANS & MUTCD STANDARDS FOR ROAD AND BRIDGE CONSTRUCTION FOR TRAFFIC CONTROL FOR SHORT DURATION OR MOBILE OPERATION ON A MULTI LANE ROAD.

LEGEND

- TYPE 1 FREEWAY OVERHEAD BRIDGE DYNAMIC MESSAGE SIGN (DMS)
- EXISTING No. 7 PULL BOX
- No. 7 PULL BOX
- EXISTING No. 9 PULL BOX
- EXISTING MICROWAVE RADAR DETECTION SENSOR
- MICROWAVE RADAR DETECTION SENSOR
- ATMS CABINET
- EXISTING 4-1/2" FIBER OPTIC CONDUITS & 1-3/4" HIGH VOLTAGE CONDUIT



STATE OF NEVADA
DEPARTMENT OF TRANSPORTATION

**TRAFFIC CONTROL
PLAN SHEET**

DESIGNED BY RTS
DRAWN BY KDS
CHECKED BY TJM
REVIEWED BY MHS

TRANSCORE

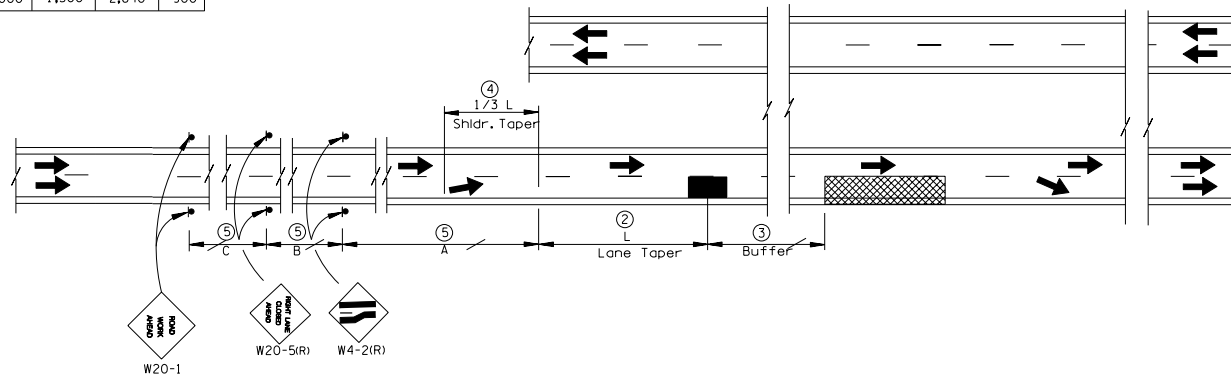
EXHIBIT A
VICTORIAN AVENUE

STATE	PROJECT NO.	COUNTY	SHEET NO.
NEVADA	SPI-080-1067)	WASHOE	TC-A2
CONTRACT# 344IDB			

5

ADVANCE WARNING SIGN SPACING

ROAD TYPE	DISTANCE BETWEEN SIGNS (ft)			
	A	B	C	L
URBAN (LOW SPEED)	100	100	100	180
URBAN (HIGH SPEED)	350	350	350	245
RURAL	500	500	500	660
EXPRESSWAY/FREEWAY	1,000	1,500	2,640	900



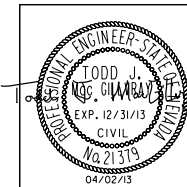
MULTI LANE SHORT DURATION

GENERAL NOTES:

- ARROW BOARDS SHALL, AS A MINIMUM BE TYPE B, WITH A SIZE OF 60X30 INCHES.
- VEHICLE-MOUNTED SIGNS SHALL BE MOUNTED IN A MANNER SUCH THAT THEY ARE NOT OBSCURED BY EQUIPMENT OR SUPPLIES. SIGN LEGENDS ON VEHICLE MOUNTED SIGNS SHALL BE COVERED OR TURNED FROM VIEW WHEN WORK IS NOT IN PROGRESS.
- SHADOW AND WORK VEHICLES SHALL DISPLAY HIGH-INTENSITY ROTATING, FLASHING, OSCILLATING, OR STROBE LIGHTS.
- SPACING BETWEEN THE WORK VEHICLE AND THE SHADOW VEHICLE SHOULD BE MINIMIZED TO DETER ROAD USERS FROM DRIVING IN BETWEEN.
- ALL NDOT STAFF SHALL WEAR A REFLECTIVE VEST AND HARD HAT.
- REFER TO TC-E1 FOR ADDITIONAL INFORMATION.
- COORDINATE WORK WITH THE CITY OF SPARKS PRIOR TO PERFORMING TRAFFIC CONTROL. CONTACT THE GENERAL MAINTENANCE DEPARTMENT AT (775) 353-2271 BETWEEN THE HOURS OF 6:00 AM TO 3:00 PM. FOR PHONE CALLS AFTER HOURS, CONTACT SPARKS POLICE DEPARTMENT DISPATCH NON-EMERGENCY LINE AT (775) 353-2231, AND ADVISE THE DISPATCHER WHERE WORK WILL BE OCCURRING AND WHETHER ANY SPECIAL ASSISTANCE FROM THE CITY OF SPARKS MAINTENANCE CREW WILL BE NEEDED.

LEGEND:

- WORK AREA/WORK VEHICLE
 - SHADOW VEHICLE w/TRUCK MOUNTED ATTENUATOR & ARROW BOARD
- See TC-E1 For TABLES and GENERAL NOTES



STATE OF NEVADA
DEPARTMENT OF TRANSPORTATION

TRAFFIC CONTROL
PLAN SHEET

DESIGNED BY RTS
DRAWN BY KDS
CHECKED BY TJM
REVIEWED BY MHS

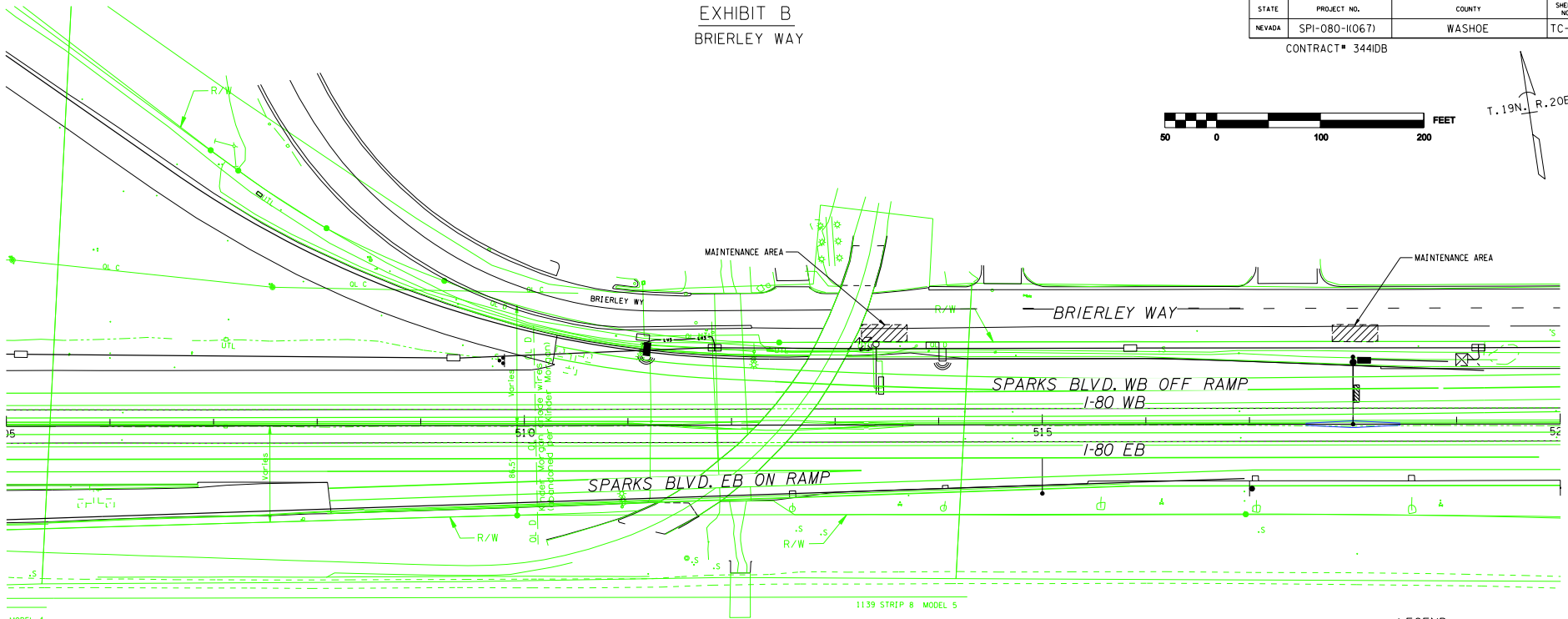
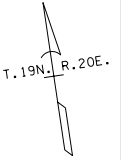
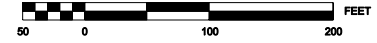
TRANSCORE

I:\Projects\Nevada\REN0_1_80\AS-Built\Sheet Files\Traffic Control\TIS_TC-A2.dgn 4/2/2013 1:05:40 AM

EXHIBIT B
BRIERLEY WAY

STATE	PROJECT NO.	COUNTY	SHEET NO.
NEVADA	SPI-080-1(067)	WASHOE	TC-B1

CONTRACT# 344IDB

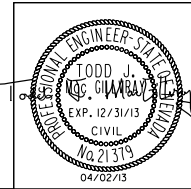


GENERAL NOTES:

1. MAINTENANCE AREAS ARE TWO 15'x40' SPACES LOCATED IN THE FAR RIGHT EAST BOUND LANE OF BRIERLEY WAY ADJACENT TO EITHER A DYNAMIC MESSAGE SIGN OR MICROWAVE RADAR DETECTION SENSOR.
2. THE MAINTENANCE WORK TO BE PERFORMED WILL BE THE USE OF A BUCKET TRUCK OR OTHER VEHICLE TO ACCESS NDOT EQUIPMENT LOCATED ADJACENT TO THE SITE.
3. COORDINATE WORK WITH THE CITY OF SPARKS PRIOR TO PERFORMING TRAFFIC CONTROL. CONTACT THE GENERAL MAINTENANCE DEPARTMENT AT (775) 353-2271 BETWEEN THE HOURS OF 6:00 AM TO 3:00 PM. FOR PHONE CALLS AFTER HOURS, CONTACT SPARKS POLICE DEPARTMENT DISPATCH NON-EMERGENCY LINE AT (775) 353-2231, AND ADVISE THE DISPATCHER WHERE WORK WILL BE OCCURRING AND WHETHER ANY SPECIAL ASSISTANCE FROM THE CITY OF SPARKS MAINTENANCE CREW WILL BE NEEDED.
4. SHEETS TC-E1 AND TC-B2 ARE REFERENCED FROM NDOT STANDARD PLANS FOR ROAD AND BRIDGE CONSTRUCTION FOR TRAFFIC CONTROL FOR SHOULDER WORK.

LEGEND

- TYPE 1 FREEWAY OVERHEAD BRIDGE DYNAMIC MESSAGE SIGN (DMS)
- EXISTING No. 7 PULL BOX
- No. 7 PULL BOX
- EXISTING No. 9 PULL BOX
- EXISTING MICROWAVE RADAR DETECTION SENSOR
- MICROWAVE RADAR DETECTION SENSOR
- ATMS CABINET
- EXISTING 4-1/2" FIBER OPTIC CONDUITS & 1-3" HIGH VOLTAGE CONDUIT



STATE OF NEVADA
DEPARTMENT OF TRANSPORTATION

**TRAFFIC CONTROL
PLAN SHEET**

DESIGNED BY RTS
DRAWN BY KDS
CHECKED BY TJM
REVIEWED BY MHS

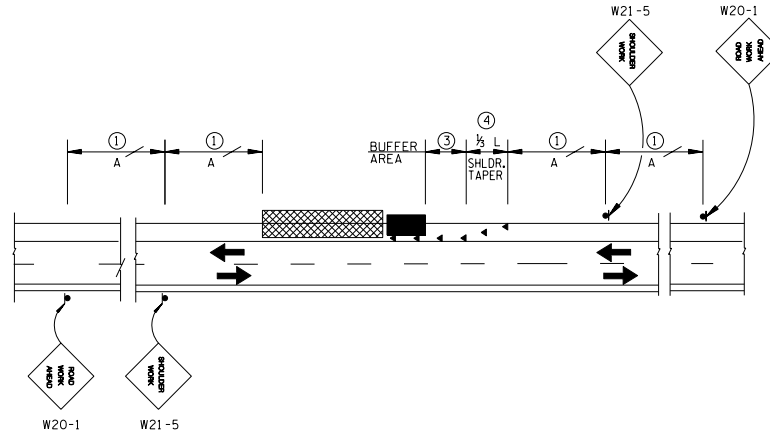
TRANSCORE

I:\Projects\Nevada\REN0 1-80 IAS-Built Sheet Files\Traffic Control\TCS-TC-B1.dgn 4/2/2013 1:05:26 AM

EXHIBIT B
BRIERLEY WAY




STATE	PROJECT NO.	COUNTY	SHEET NO.
NEVADA	SPI-080-1(067)	WASHOE	TC-B2

CONTRACT# 344IDB



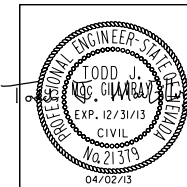
SHOULDER WORK

LEGEND:

-  - WORK AREA/WORK VEHICLE
 -  - SHADOW VEHICLE w/TRUCK MOUNTED ATTENUATOR (OPTIONAL)
 -  - CHANNELIZING DEVICES (SEE TABLE)
- See TC-E1 For TABLES and GENERAL NOTES

GENERAL NOTES:

1. RELY ON MUTCD STANDARDS FOR TRAFFIC CONTROL IF OTHER WORK NEEDED.
2. ALL NDOT STAFF SHALL WEAR A REFLECTIVE VEST AND HARD HAT.
3. REFER TO TC-E1 FOR ADDITIONAL INFORMATION.
4. COORDINATE WORK WITH THE CITY OF SPARKS PRIOR TO PERFORMING TRAFFIC CONTROL. CONTACT THE GENERAL MAINTENANCE DEPARTMENT AT (775) 353-2271 BETWEEN THE HOURS OF 6:00 AM TO 3:00 PM. FOR PHONE CALLS AFTER HOURS, CONTACT SPARKS POLICE DEPARTMENT DISPATCH NON-EMERGENCY LINE AT (775) 353-2231, AND ADVISE THE DISPATCHER WHERE WORK WILL BE OCCURRING AND WHETHER ANY SPECIAL ASSISTANCE FROM THE CITY OF SPARKS MAINTENANCE CREW WILL BE NEEDED.



STATE OF NEVADA
DEPARTMENT OF TRANSPORTATION

TRAFFIC CONTROL
PLAN SHEET



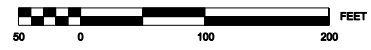
DESIGNED BY RTS
DRAWN BY KDS
CHECKED BY TJM
REVIEWED BY MIS

4/2/2013 11:01:33 AM V:\Projects\Nevada\REN01-80145-Built+Sheet Files+Traffic Control\TIS-TC-C1.dgn

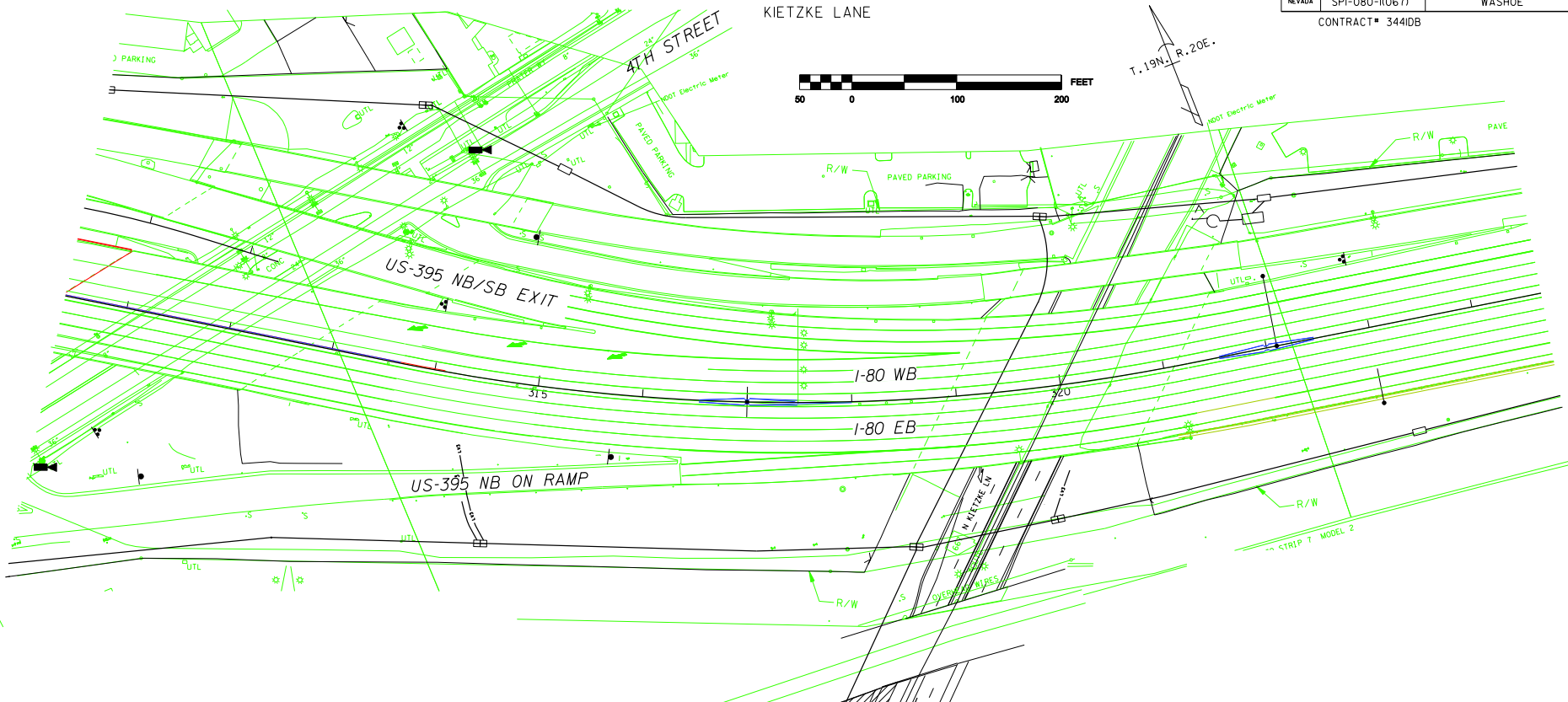
EXHIBIT C
KIETZKE LANE

STATE	PROJECT NO.	COUNTY	SHEET NO.
NEVADA	SPI-080-11067)	WASHOE	TC-C1

CONTRACT# 3441DB

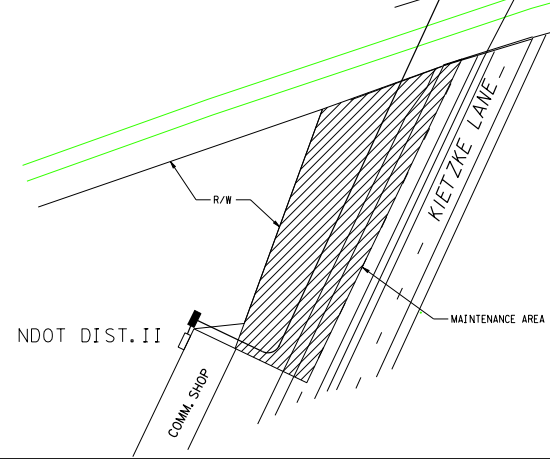


T. 19N., R. 20E.



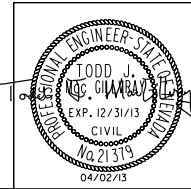
GENERAL NOTES:

1. MAINTENANCE AREA EXTENDS FROM ROADWAY ADJACENT TO THE NORTH END OF NDOT DISTRICT II COMMUNICATION SHOP BUILDING TO THE SOUTHERN RIGHT-OF-WAY BOUNDARY OF THE UNION PACIFIC RAILROAD CROSSING BETWEEN THE WESTERN RIGHT-OF-WAY BOUNDARY TO THE FAR RIGHT SOUTHBOUND LANE OF KIETZKE LANE.
2. THE MAINTENANCE WORK TO BE PERFORMED WILL BE GENERAL UPKEEP AND ACCESS OF THE NDOT OWNED FIBER OPTIC CABLE AND CONDUIT.
3. COORDINATE WORK WITH THE CITY OF SPARKS PRIOR TO PERFORMING TRAFFIC CONTROL. CONTACT THE GENERAL MAINTENANCE DEPARTMENT AT (775) 353-2271 BETWEEN THE HOURS OF 6:00 AM TO 3:00 PM. FOR PHONE CALLS AFTER HOURS, CONTACT SPARKS POLICE DEPARTMENT DISPATCH NON-EMERGENCY LINE AT (775) 353-2231, AND ADVISE THE DISPATCHER WHERE WORK WILL BE OCCURRING AND WHETHER ANY SPECIAL ASSISTANCE FROM THE CITY OF SPARKS MAINTENANCE CREW WILL BE NEEDED.
4. SHEETS TC-E1 AND TC-C2 ARE REFERENCED FROM NDOT STANDARD PLANS & MUTCD STANDARDS FOR ROAD AND BRIDGE CONSTRUCTION FOR TRAFFIC CONTROL FOR SHORT DURATION OR MOBILE OPERATION ON A MULTI-LANE ROAD.



LEGEND

	EXISTING No. 7 PULL BOX
	No. 7 PULL BOX
	EXISTING No. 9 PULL BOX
	3" FIBER OPTIC CONDUIT
	EXISTING 4-1" FIBER OPTIC CONDUITS & 1-3" HIGH VOLTAGE CONDUIT



STATE OF NEVADA
DEPARTMENT OF TRANSPORTATION

**TRAFFIC CONTROL
PLAN SHEET**

DESIGNED BY RTS
DRAWN BY KDS
CHECKED BY TJM
REVIEWED BY MHS

TRANSCORE

04/02/13

EXHIBIT C
KIETZKE LANE

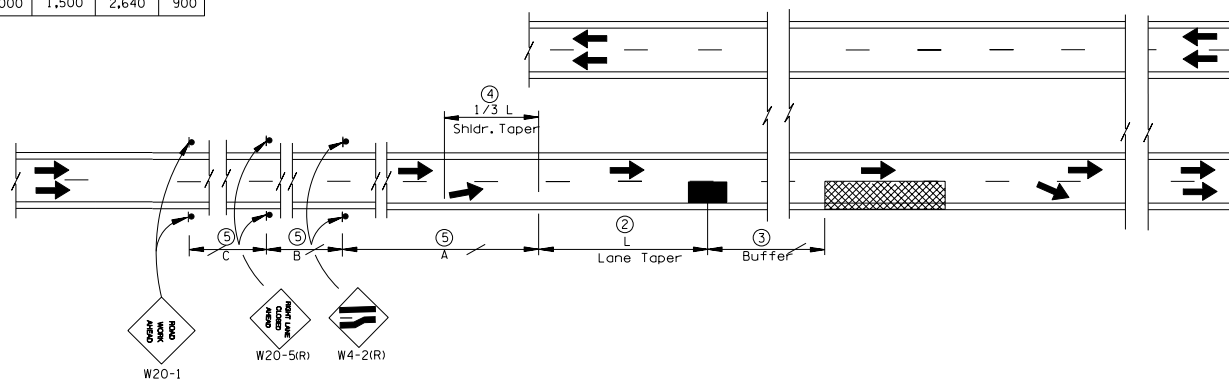
STATE	PROJECT NO.	COUNTY	SHEET NO.
NEVADA	SPI-080-1(067)	WASHOE	TC-C2

CONTRACT# 344IDB

5

ADVANCE WARNING SIGN SPACING

ROAD TYPE	DISTANCE BETWEEN SIGNS (ft)			
	A	B	C	L
URBAN (LOW SPEED)	100	100	100	180
URBAN (HIGH SPEED)	350	350	350	245
RURAL	500	500	500	660
EXPRESSWAY/FREEWAY	1,000	1,500	2,640	900



MULTI LANE SHORT DURATION

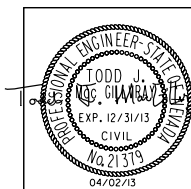
GENERAL NOTES:

- ARROW BOARDS SHALL, AS A MINIMUM BE TYPE B, WITH A SIZE OF 60X30 INCHES.
- VEHICLE-MOUNTED SIGNS SHALL BE MOUNTED IN A MANNER SUCH THAT THEY ARE NOT OBSCURED BY EQUIPMENT OR SUPPLIES. SIGN LEGENDS ON VEHICLE MOUNTED SIGNS SHALL BE COVERED OR TURNED FROM VIEW WHEN WORK IS NOT IN PROGRESS.
- SHADOW AND WORK VEHICLES SHALL DISPLAY HIGH-INTENSITY ROTATING, FLASHING, OSCILLATING, OR STROBE LIGHTS.
- SPACING BETWEEN THE WORK VEHICLE AND THE SHADOW VEHICLE SHOULD BE MINIMIZED TO DETER ROAD USERS FROM DRIVING IN BETWEEN.
- ALL NDOT STAFF SHALL WEAR A REFLECTIVE VEST AND HARD HAT.
- REFER TO TC-EI FOR ADDITIONAL INFORMATION.
- COORDINATE WORK WITH THE CITY OF SPARKS PRIOR TO PERFORMING TRAFFIC CONTROL. CONTACT THE GENERAL MAINTENANCE DEPARTMENT AT (775) 353-2271 BETWEEN THE HOURS OF 6:00 AM TO 3:00 PM. FOR PHONE CALLS AFTER HOURS, CONTACT SPARKS POLICE DEPARTMENT DISPATCH NON-EMERGENCY LINE AT (775) 353-2231, AND ADVISE THE DISPATCHER WHERE WORK WILL BE OCCURRING AND WHETHER ANY SPECIAL ASSISTANCE FROM THE CITY OF SPARKS MAINTENANCE CREW WILL BE NEEDED.

LEGEND:

- WORK AREA/WORK VEHICLE
- SHADOW VEHICLE w/TRUCK MOUNTED ATTENUATOR & ARROW BOARD

See TC-EI For TABLES and GENERAL NOTES



STATE OF NEVADA
DEPARTMENT OF TRANSPORTATION

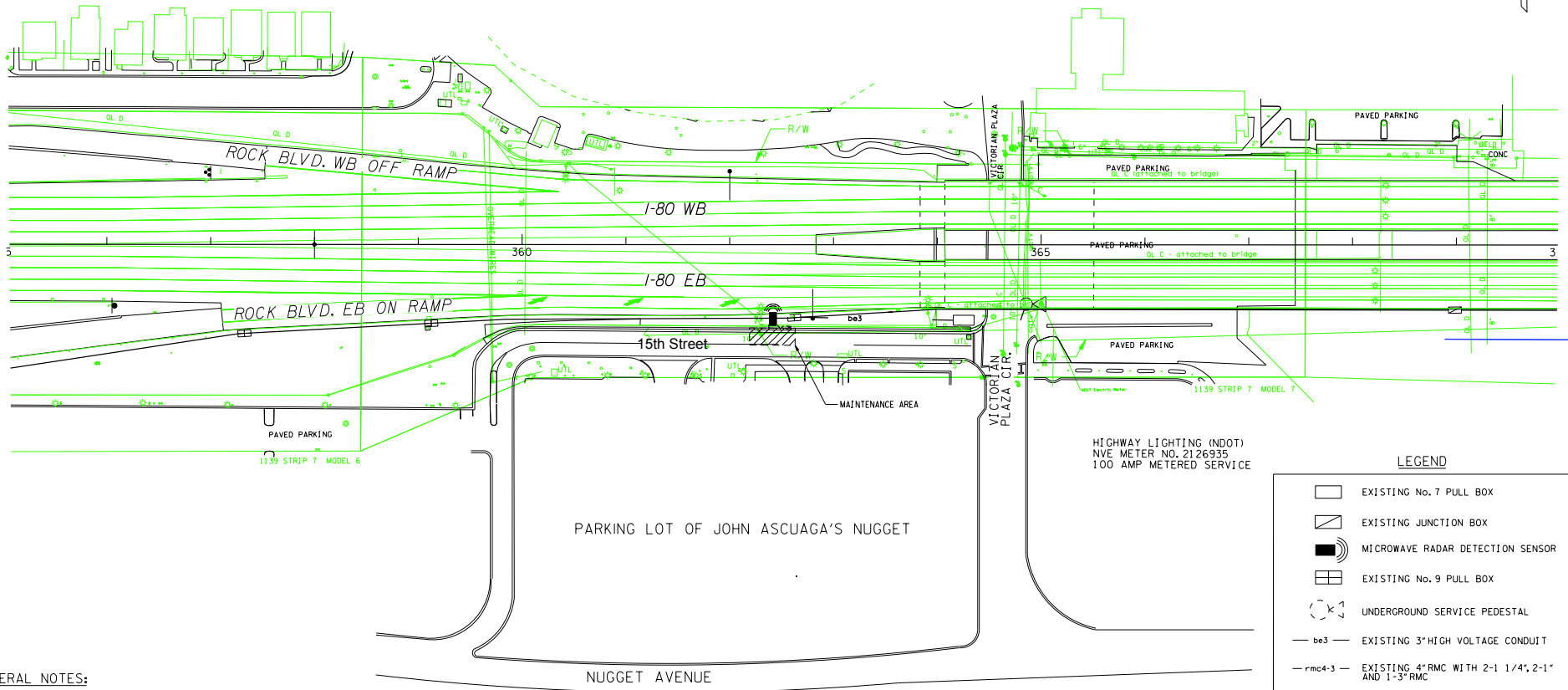
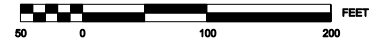
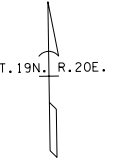
TRAFFIC CONTROL
PLAN SHEET

TRANSCORE

DESIGNED BY RTS
DRAWN BY KDS
CHECKED BY TJM
REVIEWED BY MIS

EXHIBIT D
PARKING LOT OF JOHN ASCUAGA'S NUGGET

STATE	PROJECT NO.	COUNTY	SHEET NO.
NEVADA	SPI-080-1(067)	WASHOE	TC-D1
CONTRACT# 3441DB			



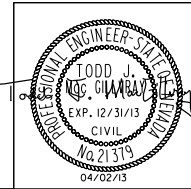
GENERAL NOTES:

1. MAINTENANCE AREA IS A 15'x40' SPACE LOCATED 1300' (± 100') EAST OF THE I-80/ROCK BLVD. INTERCHANGE IN THE JOHN ASCUAGA'S NUGGET PARKING LOT.
2. THE MAINTENANCE WORK TO BE PERFORMED WILL USE A BUCKET TRUCK TO EXTEND UP THE RETAINING WALL BEYOND THE FREEWAY GRADE TO ACCESS EQUIPMENT INSTALLED ON AN EXISTING LUMINAIRE.
3. ALL WORK SHALL BE COORDINATED BY NDOT WITH THE CITY OF SPARKS AND NUGGET MANAGEMENT PRIOR TO WORK EACH TIME MAINTENANCE AT THIS LOCATION IS REQUIRED. CONTACT SPARKS MAINTENANCE AT (775) 353-2271, SPARKS DISPATCH AFTER BUSINESS HOURS AT (775) 353-2231 AND JOHN ASCUAGA'S NUGGET AT (775) 356-3300 PRIOR TO SETTING UP.
4. SHEETS TC-E1 AND TC-D2 ARE REFERENCED FROM MUTCD STANDARD PLANS FOR SHORT DURATION OR MOBILE OPERATIONS ON A TWO LANE ROAD.

HIGHWAY LIGHTING (NDOT)
NVE METER NO. 2126935
100 AMP METERED SERVICE

LEGEND

- EXISTING No. 7 PULL BOX
- EXISTING JUNCTION BOX
- MICROWAVE RADAR DETECTION SENSOR
- EXISTING No. 9 PULL BOX
- UNDERGROUND SERVICE PEDESTAL
- be3 — EXISTING 3" HIGH VOLTAGE CONDUIT
- rmc4-3 — EXISTING 4" RMC WITH 2-1 1/4" 2-1" AND 1-3" RMC
- 4f1 1/2-be3 — EXISTING 4-1/2" FIBER OPTIC CONDUITS & 1-3" HIGH VOLTAGE CONDUIT



STATE OF NEVADA
DEPARTMENT OF TRANSPORTATION

**TRAFFIC CONTROL
PLAN SHEET**

DESIGNED BY RTS
DRAWN BY KDS
CHECKED BY TJM
REVIEWED BY MHS

TRANSCORE

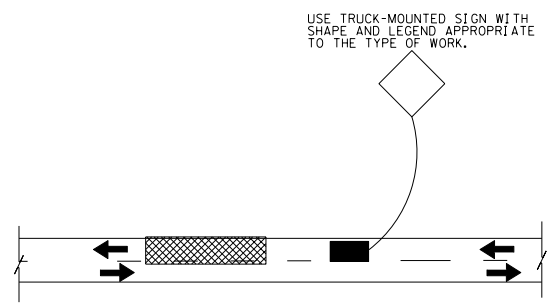
4/2/2013 11:10:03 AM V:\Projects\Nevada\REN0 1-80 IAS-Built+Sheet Files+Traffic Control\TIS-TC-D1.dgn

11:13:24 AM V:\Projects\Nevada\REN0 1-80-145-Built+Sheet Files+Traffic Control\TIS-TC-D2.dgn 4/22/2013

EXHIBIT D
PARKING LOT OF JOHN ASCUAGA'S NUGGET

STATE	PROJECT NO.	COUNTY	SHEET NO.
NEVADA	SPI-080-1(067)	WASHOE	TC-D2

CONTRACT# 344IDB





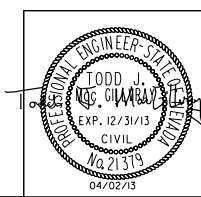
SHORT DURATION OR MOBILE OPERATION ON A TWO-LANE ROAD

GENERAL NOTES:

1. VEHICLE-MOUNTED SIGNS SHALL BE MOUNTED IN A MANNER SUCH THAT THEY ARE NOT OBSCURED BY EQUIPMENT OR SUPPLIES; SIGN LEGENDS ON VEHICLE MOUNTED SIGNS SHALL BE COVERED OR TURNED FROM VIEW WHEN WORK IS NOT IN PROGRESS.
2. SHADOW AND WORK VEHICLES SHALL DISPLAY HIGH-INTENSITY ROTATING, FLASHING, OSCILLATING, OR STROBE LIGHTS.
3. IF AN ARROW BOARD IS USED IT SHALL BE USED IN CAUTION MODE.
4. VEHICLE HAZARD WARNING SIGNALS SHALL NOT BE USED INSTEAD OF THE VEHICLES HIGH-INTENSITY ROTATING, FLASHING, OSCILLATING, OR STROBE LIGHTS.
5. ALL NDOT STAFF SHALL WEAR A REFLECTIVE VEST AND HARD HAT.
6. REFER TO TC-E1 FOR ADDITIONAL INFORMATION.
7. ALL WORK SHALL BE COORDINATED BY NDOT WITH THE CITY OF SPARKS AND NUGGET MANAGEMENT PRIOR TO WORK EACH TIME MAINTENANCE AT THIS LOCATION IS REQUIRED. CONTACT SPARKS MAINTENANCE AT (775) 353-2271. SPARKS DISPATCH AFTER BUSINESS HOURS AT (775) 353-2231 AND JOHN ASCUAGA'S NUGGET AT (775) 356-3300 PRIOR TO SETTING UP.

LEGEND:

-  - WORK AREA/WORK VEHICLE w/ OPTIONAL TRUCK-MOUNTED ATTENUATOR
 -  - SHADOW VEHICLE w/OPTIONAL TRUCK-MOUNTED ATTENUATOR
- See TC-E1 For GENERAL NOTES



STATE OF NEVADA
DEPARTMENT OF TRANSPORTATION

**TRAFFIC CONTROL
PLAN SHEET**

DESIGNED BY RTS
DRAWN BY KDS
CHECKED BY TJM
REVIEWED BY MHS




EXHIBIT A, B, C AND D
VICTORIAN AVENUE, BRIERLEY WAY, KIETZKE LANE
& PARKING LOT OF JOHN ASCUAGA'S NUGGET

STATE	PROJECT NO.	COUNTY	SHEET NO.
NEVADA	SPI-080-1067)	WASHOE	TC-EI

CONTRACT# 344IDB

①
ADVANCE WARNING SIGN SPACING

SPEED (mph)	DISTANCE BETWEEN SIGNS (ft)		
	A	B	C
	0-20	200	200
25-30	300	300	300
35-40	400	400	400
45-50	600	600	600
55-75	1000	1600	2640

ADVANCE WARNING ARROW PANEL

TYPE	MINIMUM SIZE (INCHES)	POSTED SPEED
A	48 X 24	30 MPH OR LESS
B	60 X 30	35 MPH TO 50 MPH
C	96 X 48	55 MPH OR MORE

②
TAPER LENGTH AND CHANNELIZING DEVICE SPACING

SPEED (mph)	LENGTH FOR MERGING TAPER (L)			TAPER & CHANNELIZATION DEVICE SPACING (ft)
	LANE WIDTH			
	10.0ft	11.0ft	12.0ft	
20	80	80	80	20
25	125	125	125	25
30	150	180	180	30
35	210	245	245	35
40	280	320	320	40
45	450	495	540	45
50	500	550	600	50
55	550	605	660	55 *
60	600	660	720	60 *
65	650	715	780	65 *
70	700	770	840	70 *
75	750	825	900	75 *

* ON RURAL INTERSTATE HIGHWAYS WHERE THE SPEED LIMIT IS 55 MPH OR GREATER, THE CHANNELIZATION DEVICE SPACING (EXCEPT FOR TAPERS) MAY BE INCREASED TO 80 FEET. WHEN INCREASED DEVICE SPACING IS USED, 3 DRUMS WILL BE PLACED DIAGONALLY AT 0.5 MILE INCREMENTS TO INDICATE THE LANE IS CLOSED.

③
BUFFER LENGTH

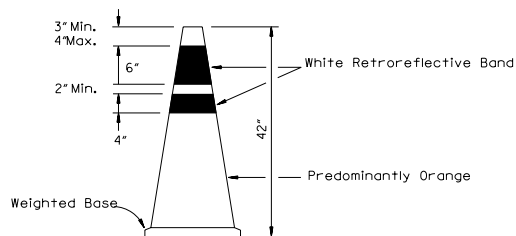
SPEED (mph)	LENGTH (ft)
20	115
25	155
30	200
35	250
40	305
45	360
50	425
55	495
60	570
65	645
70	730
75	820

④
SHIFTING TAPER = 1/2 L
SHOULDER TAPER = 1/3 L

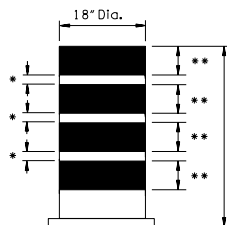
$$L = \frac{WS^2}{60}$$

S = Speed(mph)
 L = Taper Length(ft)
 W = Width of Lateral Shift(ft)

CHANNELIZING DEVICES



ORANGE TRAFFIC CONES



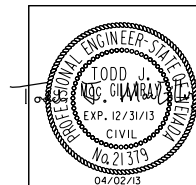
TRAFFIC DRUMS

Shall Have a Minimum of 2-White & 2-Orange Retroreflective Bands

- * 2" Max. Non-Retroreflective Material
- ** 4" Min.- 6" Max. Retroreflective Material

GENERAL NOTES:

- R2-1 AND W3-5A MAY BE USED TO REDUCE EXISTING SPEED LIMIT TO 55 mph IF EXISTING SPEED LIMIT IS 65 mph THRU 75 mph, OTHER SPEED REDUCTIONS MUST BE APPROVED BY THE DIRECTOR.
- THE W1-3 SIGNS SHALL BE USED WHEN THE RECOMMENDED SPEED ON A CURVE IS 30 mph OR LESS, THE W1-4 SIGNS SHALL BE USED WHEN THE RECOMMENDED SPEED IS 35 mph OR GREATER.
- THE W6-3 AND R4-1 SIGNS SHALL BE INSTALLED ALTERNATELY AT 0.5 MILE INTERVALS WHEN THE LENGTHS OF CROSSOVERS EXCEED 0.5 MILE.
- ALL REGULATORY SIGNS (R SERIES) SHALL BE BLACK ON RETROREFLECTIVE WHITE.
- ALL WARNING SIGNS (W SERIES) SHALL BE BLACK ON RETROREFLECTIVE ORANGE.
- WARNING SIGNS SHALL BE A MINIMUM OF 3' x 3' FOR SPEEDS OF 45 mph OR LESS, R2-1 SHALL BE 3' x 4'.
- WARNING SIGNS SHALL BE A MINIMUM OF 4' x 4' FOR SPEEDS OF 50 mph OR GREATER, R2-1 SHALL BE 4' x 5'.



STATE OF NEVADA
 DEPARTMENT OF TRANSPORTATION

**TRAFFIC CONTROL
 PLAN SHEET**



DESIGNED BY RTS
 DRAWN BY KDS
 CHECKED BY TJM
 REVIEWED BY MHS